



MANLY SAILING CLUB INC

Club Championship
Begins 20th October 2019 ends 29th March 2020

The Organising Authority is the Manly Sailing Club inc

SAILING INSTRUCTIONS

NB: The notation '[DP]' in a rule in the SI means that the penalty for a breach of that rule may, at the discretion of the protest committee, be less than disqualification.

1 RULES

- 1.1 The regatta will be governed by the rules as defined in *The Racing Rules of Sailing*.
- 1.2 The Yachting New Zealand Safety Regulations Part 1 shall apply
- 1.3 Appendix T, *Arbitration*, will apply.
- 1.4 Racing rule 44.1 will be changed so that the two turns penalty is replaced by the one turn penalty for the Open Skiff, Feva and 29er classes only.

2 NOTICES TO COMPETITORS

Notices to competitors will be posted on the official notice board located in the lower floor of the Clubhouse. Notices will also be posted on the MSC website and Club Team App.

3 CHANGES TO SAILING INSTRUCTIONS

Any change to the sailing instructions will be posted before 0900 on the day it will take effect, except that any change to the schedule of races will be posted by 2000 on the day before it will take effect.

4 SIGNALS MADE ASHORE

- 4.1 Signals made ashore will be displayed from the Club flagpole.
- 4.2 When flag AP is displayed ashore, '1 minute' is replaced with 'not less than 30 minutes' in the race signal AP.



5 SCHEDULE OF RACES/CLASS FLAGS

5.1 Schedule of Racing:

| 2019 | 2020 |
|---------------------------|---------------------------|
| October 20 th | January 19 th |
| November 3 rd | February 2 nd |
| November 10 th | February 9 th |
| December 8 th | February 23 rd |
| | March 1 st |
| | March 8 th |
| | March 29 th |

5.2 To alert boats that a race or sequence of races will begin soon, the orange starting line flag will be displayed with one sound at least five minutes before a warning signal is made.

5.3 Up to Five (5) races may be sailed each day.

5.4 The scheduled time of the warning signal each day is 1255hrs.

5.5 A briefing will be held each race day at 1200hrs in front of the clubhouse.

6 RACING AREAS

The Race Area will be on the waters out in front of the clubhouse.

7 THE COURSES

7.1 The diagrams in Attachment (1) show the courses, the order in which marks are to be passed, and the side on which each mark is to be left.

7.2 The course to be sailed each day will be explained at the daily briefing

8 MARKS

8.1 The marks to be used will be identified at the briefing.

8.2 A race committee vessel signalling a change of a leg of the course is a mark as provided in SI 10.2.

9 STARTS

9.1 Races will be started by using RRS 26 with the warning signal Three (3) minutes before the starting signal.



| Minutes before starting signal | Visual Signal | Sound Signal | Means |
|---------------------------------------|--------------------------|---------------------|--------------------|
| 3 | Class Flag | One | Warning Signal |
| 2 | Preparatory flag | One | Preparatory signal |
| 1 | Preparatory flag removed | One long | One minute |
| 0 | Class Flag removed | One | Starting signal |

9.2 The starting line will be between a staff displaying an orange flag on the Signal Boat at the starboard end and the course side of the port-end starting mark.

9.3 Boats whose warning signal has not been made shall avoid the starting area during the starting sequence for other races. [DP]

10 CHANGE OF THE NEXT LEG OF THE COURSE

10.1 To change the next leg of the course, the race committee will move the original mark (or the finishing line) to a new position.

10.2 Except at a gate, boats shall pass between the race committee vessel signalling the change of the next leg and the nearby mark, leaving the mark to port and the race committee vessel to starboard. This changes RRS 28.

11 THE FINISH

11.1 The finishing line will be between a staff displaying blue flag on the signal Boat and the windward edge of the finish mark.

12 PENALTY SYSTEMS

12.1 For the Open Skiff, Feva and 29er classes RRS 44.1, is changed so that the Two-Turns Penalty is replaced by the One-Turn Penalty.

13 TIME LIMITS AND TARGET TIMES

13.1 *Time limits and target times are as follows

| CLASS | TARGET TIME | FINISH WINDOW | TIME LIMIT |
|--------------|--------------------|----------------------|-------------------|
| All Classes | 30 Mins | 10 mins | 40 Mins |
| | | | |
| | | | |

13.2 Boats failing to finish within the Finish Window after the first boat sails the course and finishes will be awarded their placing at the last mark rounded



14 PROTESTS AND REQUESTS FOR REDRESS

- 14.1** Immediately after finishing a boat intending to protest shall, inform the race committee at the finishing line of her intention to protest and the identity of the boat(s) protested against. The protesting boat must receive an acknowledgement from the race committee. This changes RRS 61.
- 14.2** It is the MSC intention to have all sailors compete fairly and consider the alternative penalty before finishing to ensure a finishing place.
- 14.3** Arbitration will be available for any incident that is not resolved on the water with the alternative penalty.

15 SCORING

- 15.1** The scoring system is as follows:
- a) Non Club Members will be scored in an “All Comers” Class division that will include club members for each class division.
 - b) Financial Club Members will be scored separately in each of their Class divisions for the Club Championship of those divisions.
- 15.2** Twenty (20) races are required to be completed to crown a Club Champion.
- 15.3**
- a) When twenty (20) races have been completed, a boat’s series score will be the total of her race scores.
 - b) When 21 to 30 races have been completed, a boat’s series score will be the total of her race scores excluding her worst three (3) scores.
 - c) For every 5 races completed from 30 an additional worst score will be excluded.

16 SAFETY REGULATIONS

- 16.1** Boats not leaving the shore for a scheduled race shall promptly notify the race office.
- 16.2** Check –out and check –in ashore:
- a) Competitors shall individually check out before racing by personally having their QR code scanned [DP]
 - b) Competitors shall individually check-in immediately on returning to shore after racing, by having their QR Code scanned[DP]
- 16.3** A boat retiring from racing shall notify the Race Committee before leaving the racing area, or if that is not possible, shall notify the Race Office as soon as possible after returning ashore. [DP]



17 SUPPORT BOATS

- 17.1** Except when requested to participate in rescue operations, coaches, and other support persons shall stay outside areas where boats are racing and are restricted to a 5 knot speed limit when in the proximity of other boats, [DP]
- 17.2** Coaching is permitted for the sailors who are obviously having difficulty with the conditions in the lower 50% of any class fleet.
- 17.3** Attention is drawn the relevant local council bylaws regarding wearing of lifejackets and other restrictions.
- 17.4** When flag V (with a long sound signal) is displayed on a committee boat all support boats are requested to remain afloat and assist all sailors.

18 PRIZES

At the conclusion of the Club Championship series Medals will be awarded as follows:

| | |
|--------------------|--|
| Open Skiff Gold: | 1 st ,2 nd and 3 rd |
| Open Skiff Silver | 1 st ,2 nd and 3 rd |
| Starling | 1 st ,2 nd and 3 rd |
| Laser Radial Youth | 1 st ,2 nd and 3 rd |
| Laser Radial Open | 1 st ,2 nd and 3 rd |
| Laser 4.7 Youth | 1 st ,2 nd and 3 rd |
| Feva Youth | 1 st ,2 nd and 3 rd |
| Feva Open | 1 st ,2 nd and 3 rd |
| 29er | 1 st ,2 nd and 3 rd |
| Hobie | 1 st ,2 nd and 3 rd |
| Zephyr | 1 st ,2 nd and 3 rd |
| Windfoilers | 1 st ,2 nd and 3 rd |

19 INSURANCE

Refer to NOR 14

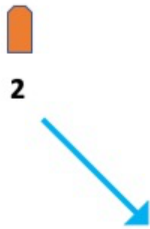
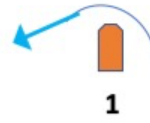
20 DISCLAIMER OF LIABILITY

Competitors participate in the regatta entirely at their own risk. See RRS 4, Decision to Race. The organising authority will not accept any liability for material damage or personal injury or death sustained in conjunction with or prior to, during, or after the regatta.

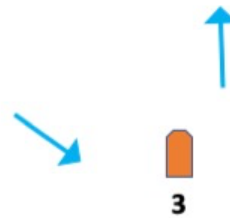


Attachment 1

Triangle



Course: Start - 1 - 2 - 3 - 1 - 3 - Finish



W L (A)



Course 1 Start – 1 – 2S/2P – Finish

Course 2 Start – 1 – 2S/2P – 1 – 2S/2P – Finish



W L (B)

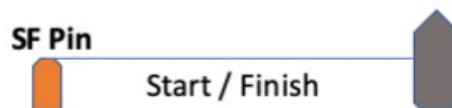


Course 1 Start – 1 – 2S/2P – Finish

Course 1A Start – 1A – 2S/2P – Finish

Course 2 Start – 1 – 2S/2P – 1 – 2S/2P – Finish

Course 2A Start – 1A – 2S/2P – 1A – 2S/2P – Finish



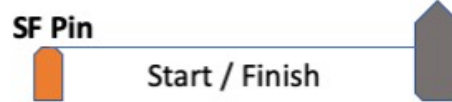
W L (M)



1 A



1



Course 1 Start – 1 – 2S/2P – Finish

Course 1A Start – 1A – 2S/2P – Finish

Course 2 Start – 1 – 2S/2P – 1 – 2S/2P – Finish

Course 2A Start – 1A – 2S/2P – 1A – 2S/2P – Finish



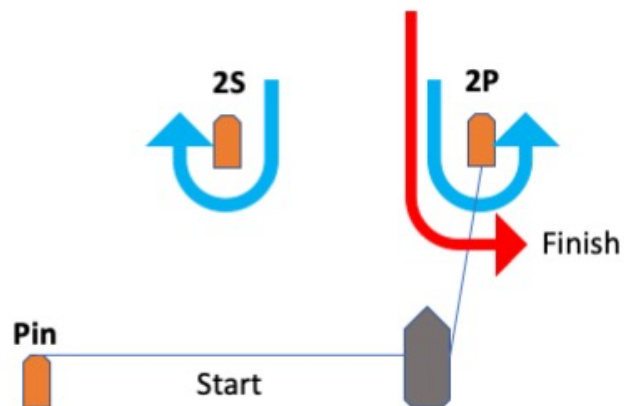
WL (C)



Course 1: Start – 1 – 2P – Finish

Course 2: Start – 1 – 2S/2P – 1 – 2P – Finish

Course 3: Start – 1 – 2S/2P – 1 – 2S/2P – 1 – 2P - Finish

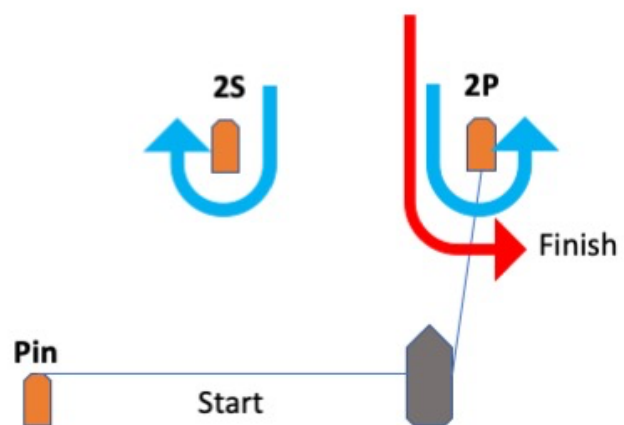


W L (D)



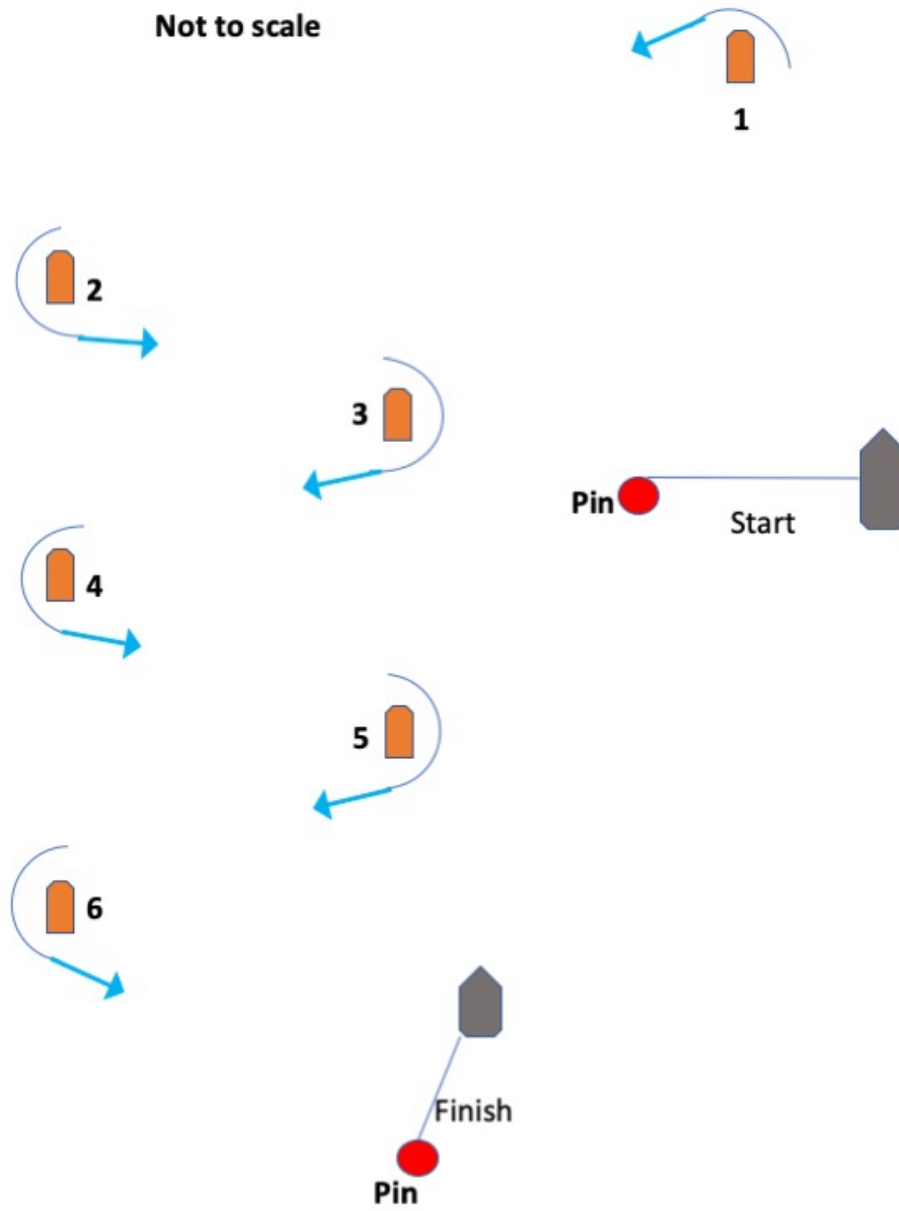
Course 1: Start – 1/1A – 2P – Finish

Course 2: Start – 1/1A – 2S/2P – 1 – 2P – Finish



Slalom Course

Not to scale



Start - 1 - 2 - 3 - 4 - 5 - 6 - Finish

