



INTERNATIONAL MOTH WORLDS NZ

International Moth Class

2024 World Championships

Manly Sailing Club Auckland New Zealand

30th December 2024 to 9th January 2025

The Organising Authority is the Manly Sailing Club (inc) in conjunction with NZ International Moth Class Association

NOTICE OF RACE *(With Amendments 1, 2 3 included)*

[NP] denotes a rule that shall not be grounds for protests by a boat. This changes RRS 60.1(a).

[DP] denotes a rule for which the penalty is at the discretion of the Protest Committee.

[SP] denotes a rule for which a standard penalty may be applied by the race committee without a hearing or a discretionary penalty applied by the Protest Committee with a hearing

1. RULES

- 1.1 The event will be governed by the rules as defined in The Racing Rules of Sailing.
- 1.2 The Class and Championship Rules of the International Moth Class Association will apply except for any that are altered by the Notice of Race or the Sailing Instructions. The Class



Race Management Guidelines will also apply, but a failure to follow these Guidelines is not on its own grounds for redress. This changes RRS 62.1(a).

1.3 No National Prescriptions will apply.

1.4 [DP] Competitors shall wear helmets whilst on the water.

2. SAILING INSTRUCTIONS

The Sailing Instructions will be published at the latest by 27th December 2024 on the regatta website. No printed copies will be provided by the Organising Authority.

3. COMMUNICATION

3.1 The official notice board is located online at: www.mothworlds.org

3.2 Except in an emergency a boat shall neither make nor receive radio transmissions, text messages or cellular phone calls while racing.

4. ELIGIBILITY AND ENTRY

4.1 Competitors shall comply with World Sailing Eligibility Code (Regulation 19).

4.2 All competitors shall be fully paid-up members of their National Moth Class Association or of the International Moth Class Association where there is no appropriate national Class Association.

4.3 The helmsperson named on the boat entry form shall be the same for all races.

4.4 Competitors shall enter by completing the Online Entry process. The Entry System will open at 2100 NZT on Monday 12th February 2024. A link to the registration will be on the Moth Worlds website www.mothworlds.org

5. FEES

| Event | Fee if paid by 1 October 2024 | Fee if paid 2 October 2024 to 1 December 2024 |
|------------------------------|-------------------------------|---|
| Oceania Championship | NZ\$300 | NZ\$600 |
| 2024 Moth World Championship | NZ\$750 | NZD\$1050 |

Support vessel fee per vessel NZ\$300

If the event is postponed or cancelled the organising authority will use reasonable endeavours to refund as much of the entry fee as possible, though the amount of any such refunds cannot be guaranteed.



6. ADVERTISING

Competitors shall be required to wear Bibs and boats may be required to display Bow stickers and advertising chosen and supplied by the Organising Authority.

7. FORMAT OF RACING.

- 7.1 There will be up to 8 races in the Oceania Championship and up to 20 races in the World Championships. Both events may be divided into Qualifying Series and Final Series.
- 7.2 The 'Grand Prix' (Lapped Finish) procedure will be used. This procedure will be described in full in the Sailing Instructions.

8. SCHEDULE OF EVENTS

8.1 Format of Racing

| Day & Date | Time | Activity |
|------------------------------------|-------------|------------------------------------|
| Monday 30 th Dec 2024 | 0900 - 1700 | Registration and Measuring |
| Tuesday 31 st Dec 2024 | 0900 - 1700 | Registration and Measuring |
| Tuesday 31 st Dec 2024 | 1700 | Briefing for Oceania Championship. |
| Wednesday 1 st Jan 2025 | 1200 | Oceania Championship 4 races |
| Thursday 2 nd Jan 2025 | 1200 | Oceania Championship 4 races |
| Friday 3 rd Jan 2025 | 0900 -1700 | Registration and Measuring |
| Friday 3 rd Jan 2025 | 1700 | Briefing for World Championship |
| Friday 3 rd Jan 2025 | 1800 | Opening Function and Dinner |
| Saturday 4 th Jan 2025 | 1200 | Qualifying |
| Sunday 5 th Jan 2025 | 1200 | Qualifying |
| Monday 6 th Jan 2025 | 1200 | Qualifying |
| Tuesday 7 th Jan 2025 | | Reserve Day |
| Wednesday 8 th Jan 2025 | 1200 | Finals |
| Thursday 9 th Jan 2025 | 1200 | Finals |

Prize Giving and Closing Ceremony as soon as possible after the Final Races. *Reserve Day may be used as a race day if required.

- 8.2 On Thursday 2nd Jan there will be no warning signal after 1700. On Thursday 9th Jan there will be no warning signal after 1600.

9. MEASUREMENT

- 9.1 Each boat shall produce a valid measurement certificate, either electronic or hardcopy, at the time of registration.



- 9.2 All boats may be inspected for class rules compliance prior to racing, according to the Schedule of Events. Additional spot measurement checks may be carried out during the Championships. Measurement checks or inspections do not reduce the responsibilities of each competitor set out in this Notice of Race.
- 9.3. The Organising Authority will provide a limited measurement service to assist competitors needing fundamental measurement of equipment being aware that in some locations access to measurers locally can be difficult. Should competitors require measurement at the event, this will be completed on a first come first served basis and to assist the Measurer, competitors should email mothworlds24@manlysailingclub.org.nz , setting out the scope of measuring required (i.e full boat or specific items). **Competitors should endeavour to have their equipment measured prior to arrival at the venue.**
- 9.4 Equipment shall only be replaced with permission of the Race Committee.
- 9.5 A maximum of 2 sails, 2 mast configurations may be used. Foils including verticals and horizontals shall be restricted to a maximum of 2 per instance.
- 9.6 A boat may only change its foils, verticals or horizontals, when ashore at Manly Sailing Club.

10. VENUE

The 2024 International Moth World Championships and the Oceania Championship will be held at the Manly Sailing Club Whangaparaoa Auckland New Zealand For shipping and logistics See **Attachment C** and for accommodation information See **Attachment D**

11. COURSES

Courses will be windward/leeward and set out in the Sailing Instructions.

12. PENALTY SYSTEM

RRS 44.1 and RRS P2.1 are changed so that the Two-Turns penalty is replaced by a 270 degree turn, with a gybe required if on an upwind leg, or a tack required if on a downwind leg.

13. SCORING

The scoring system will be set out in the Sailing Instructions.

14. SUPPORT VESSELS

- 14.1 All support vessels will register with the Manly Sailing Club by completing an online Event Support Boat Registration Form online. See Attachment B
- 14.2 If called upon support vessels will be required to act as rescue vessels.



15. BERTHING

Boats shall be kept in the assigned places at the boat park.

16. INTERNATIONAL JURY

An International Jury will be appointed in accordance with RRS 91(b). Its decisions will be final as provided in RRS 70.5.

17. PRIZES

17.1 The following prizes will be awarded for the World Championship:

Top Male overall: Male World Champion

Top Female overall: Female World Champion

Prizes for the first 3 positions in the Silver Fleet if applicable

1st Master: aged 45 years or older as of 1st June 2024

1st Grand Master 55 years or older as of 1st June 2024

1st Junior: aged 23 years or younger as of 1st June 2024

Other special trophies as directed by IMCA.

1st, 2nd and 3rd on Handicap based on event scores.

17.2 The following prizes will be awarded for the Oceania Championship:

Prizes for the first 3 positions in the overall rankings

1st Female

1st Junior: aged 23 years or younger as of 1st June 2024

1st, 2nd and 3rd on Handicap based on event scores.

17.3 Additional prizes may be awarded at the discretion of the Organising Authority.

18. SAFETY [DP]

RRS 40.1 applies at all times while afloat.



19. INSURANCE

Each participating boat shall be insured with valid third-party liability insurance with a minimum cover of NZ\$ 1,000,000 per incident or the equivalent.

20. RISK STATEMENT

RRS 3 of the Racing Rules of Sailing states: "The responsibility for a boat's decision to participate in a race or to continue racing is hers alone." Sailing is by its nature an unpredictable sport and therefore inherently involves an element of risk. By taking part in the event, each competitor agrees and acknowledges that:

- a) They are aware of the inherent element of risk involved in the sport and accept responsibility for the exposure of themselves, their crew and their boat to such inherent risk whilst taking part in the event;
- b) They are responsible for the safety of themselves and their boat and their other property whether afloat or ashore;
- c) They accept responsibility for any injury, damage or loss to the extent caused by their own actions or omission;
- d) Their boat is in good order, equipped to sail in the event and they are fit to participate;
- e) The provision of a race management team, patrol boats and other officials and volunteers by the event organiser does not relieve them of their own responsibilities;
- f) The provision of patrol boat cover is limited to such assistance, particularly in extreme weather conditions, as can be practically provided in the circumstances.
- g) It is their responsibility to familiarise themselves with any risks specific to this venue or this event drawn to their attention in any rules and information produced for the event and to attend any competitors briefing held for this event.

21. MEDIA RIGHTS, CAMERAS AND ELECTRONIC EQUIPMENT

21.1 Competitors automatically grant to the Organising Authority without payment the right in perpetuity to make, use and show any motion pictures, still pictures and live, taped or filmed television of or relating to the event

22. SUSTAINABILITY

All competitors are encouraged to use non-single use water bottles and recycle all appropriate items.



23. DATA PROTECTION

23.1 The personal information you provide to the Organising Authority will be used to facilitate your participation in the event. If you have agreed to be bound by the Racing Rules of Sailing and the other rules that govern the event (the rules), the legal basis for processing that personal information is contract. If you are not bound by the rules, the legal basis for processing that personal information is legitimate interest. Your personal information will be stored and used in accordance with the Organising Authority's privacy policy. When required by the rules, personal information may be shared with YNZ and/or World Sailing. The results of the event and the outcome of any hearing or appeal may be published.

23.2 Boats may be required to carry cameras, sound equipment or positioning equipment as specified by the Organising Authority.

23.3 The top three (3) competitors, as well as the individual race winners, may be required to attend a media press conference each day.

23.4 Competitors may be required to be interviewed during the regatta.

24. FURTHER INFORMATION

Further notices about accommodation suggestions, social events will be available on the 2024 Moth World Championship website at www.mothworlds.org

Our Sponsors



Contact

For further information, please contact:

Paul Pearson

Mothworlds24@manlysailingclub.org.nz

Harold Bennett

Vice Commodore

Manly Sailing Club

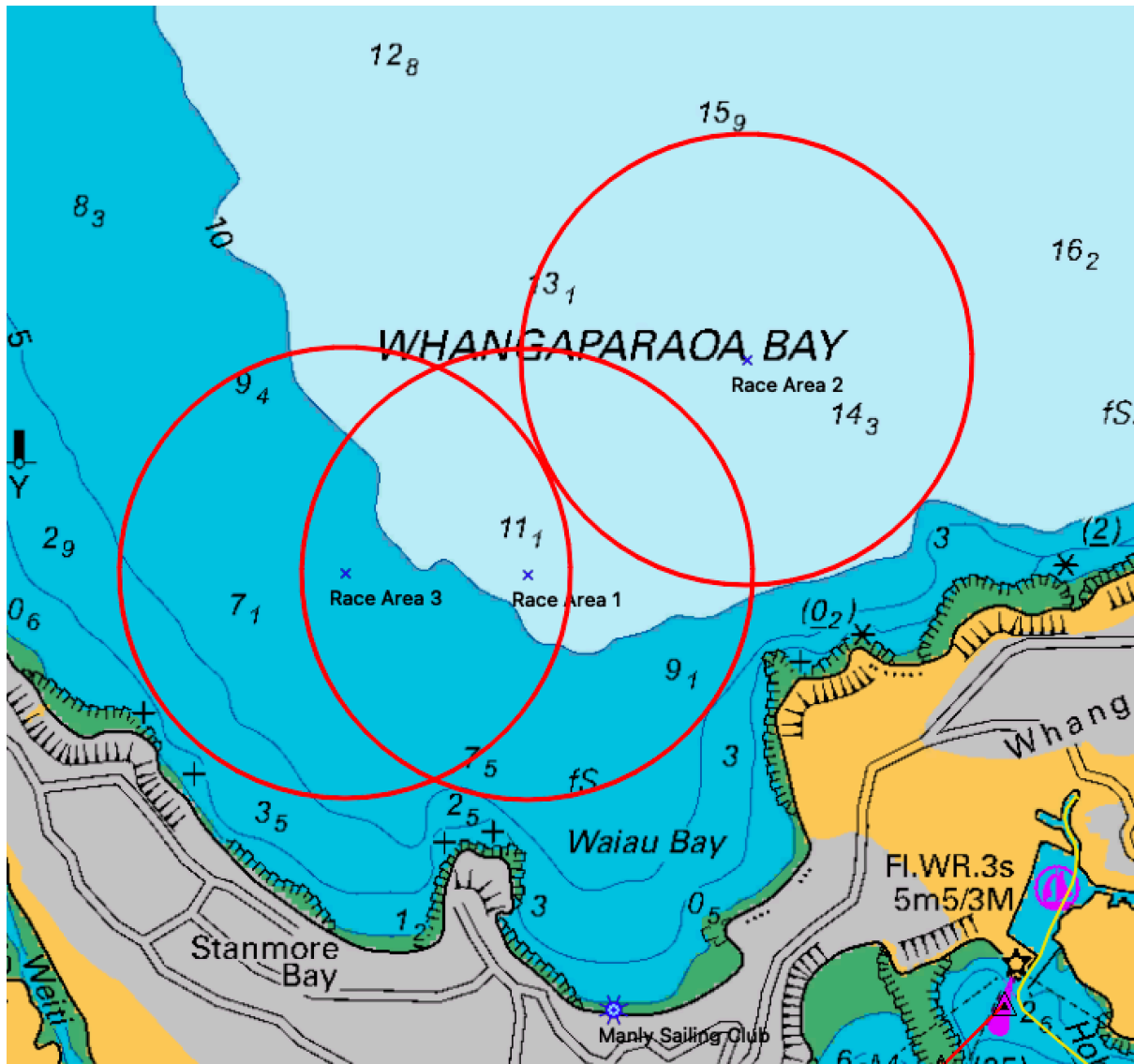
Chairman Organising Committee

2024 International Moth World Championship

vicecommodore@manlysailingclub.org.nz



ATTACHMENT A - RACING AREA



If two race areas are required Areas 2 and 3 will be used. If only one race area is required race area 1 will be used.

The race area circles are 1.6 nm diameter



ATTACHMENT B - SUPPORT VESSEL REGULATIONS

Support Vessels shall carry the following Equipment on board

- Life jackets / buoyance aids for the driver and all passengers,
- Engine kill cord (also known as a safety lanyard or automatic engine immobiliser) with a spare kill cord on the support vessel
- VHF radio capable of receiving instruction from Safety or Race Committee
- First-aid kit
- Device for making a sound signal
- Compass
- Adequate anchor and tackle for conditions and depth
- Tow rope (minimum 15m long and 10mm thick)
- Knife, small Adjustable wrench, Allen Keys, screwdriver, small vicegrips and any other tools needed in the event of having to lower a rig.

Support Vessel Regulations

- Support Vessels shall be registered with the Organising Authority and shall be marked with their applicable national sail letters clearly displayed, the minimum height for these letters is 200mm.
- Support Vessels shall comply with all local regulations
- Support Vessels shall follow Race Committee instructions on the designated VHF channel 77. Local regulations require a VHF certificate of competency to use a VHF.
- Kill cords shall be worn at all times when the engine is running
- Life jackets / buoyance aids – shall be worn at all times when afloat
- Support vessels shall not be positioned, except during rescue operations
 - o Closer than 100 metres of any boat racing
 - o Within 100 metres of the starting line and its extensions from the warning signal until all boats have left the starting area or the race committee signals a postponement, general recall or abandonment
 - o Within 100 metres of any mark of the course while boats are in the vicinity of that mark



- o Within 100 metres of the finishing line while boats are finishing
- o In addition, support boats that are motoring above 5knots shall remain at least 150 metres from any boat racing

Support boats should not make any aggressive action or induce a wake in front of any boat that is racing.

Mooring and Refueling

- There are no Marina facilities at Manly therefore all support vessels will either be on Temporary moorings near the beach or removed from the water and parked in an assigned area.
- There is no refuelling at the Manly Sailing Club but a gas station is within 2 Km of the site where fuel can be purchased in tote tanks.
- There will be limited places available on the moorings and limited spaces ashore.

Local Regulations

- Support Vessels shall complete registration before launching.
- **NOTE:** There are No Local regulations regarding support boat skippers being licenced

Support Person (Coach) Registration

- On registration support persons will be required to confirm the sail numbers of the boats they are supporting
- On registration support persons will be required to confirm that their vessel has Third Party Liability insurance to the value of NZ\$3,000,000 per incident or equivalent.



Attachment C Freight/Logistics

Transport of Equipment

Due to the timing of the event, boats that will be brought into New Zealand will have to be landed and through customs and on site prior to Christmas. To ensure that sailing equipment, boats, gear and anything required to compete arrive in a timely manner, OCEANBRIDGE are the company that we strongly advise all competitors work through. This company have serviced all sailing events into and out of New Zealand for many years.

OceanBridge have committed to making the entry and departure of all goods as smooth and safe as possible if all documentation is carried out as required. To facilitate this process the point of contact is:-

Stephen Pipes

Customs - Trade Manager

stephenp@oceanbridge.co.nz

+64 09 489-6070

For further information www.mothworlds.org On the opening page scroll down to Logistics Info and click on the Logistics Info button and you will find all the information required.



Attachment D Accommodations

Accommodation

For all information relating to available accommodation in the Manly/Whangaparaoa area, use the link below and select the button labelled "Accommodation":-

<https://www.manlysailingclub.org.nz/moth-worlds.html>

