



29er Autumn Regatta #1

TracTrac GPS Tracking – Competitor Instructions

1. Purpose of Tracking

GPS tracking of boats will be used for Media, replay, and event coverage.

2. Collection and Responsibility

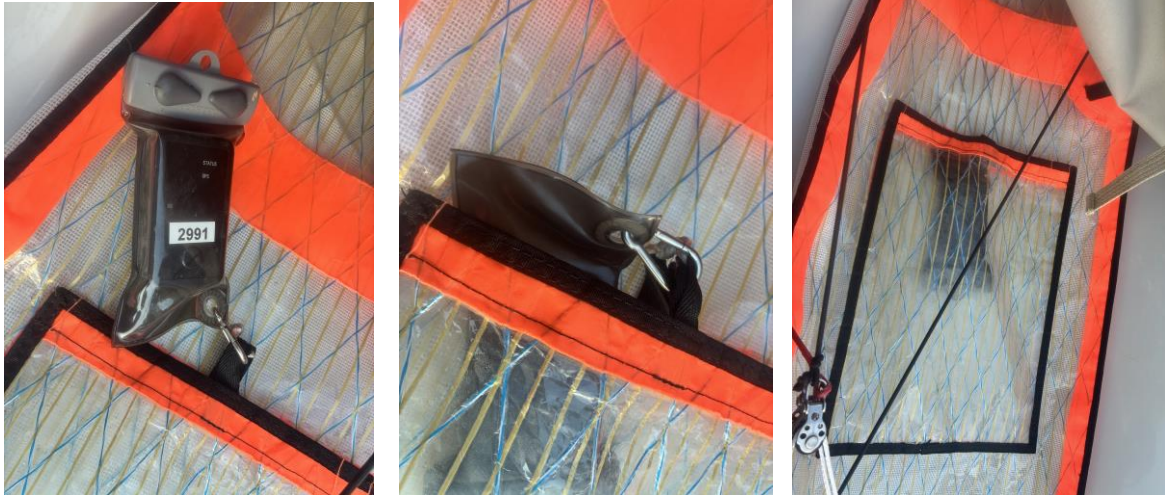
- a. Each boat shall collect a GPS tracking device from the sign-on desk.
- b. The competitor is responsible for the care of the device while it is in their possession.
- c. Trackers shall be returned at the end of racing each day at sign-off.

3. Device Operation

Trackers will be provided in the “on” state at sign-on. If the device is turned off, press and hold the power button until a vibration is felt. After a short time, a flashing green LED indicates the device is on.

4. Mounting the Device (29er Guidance)

The tracker shall be clipped to the tab attached to the pocket on the kite sock. The device shall then be placed inside the kite sock with the Velcro securely fastened.



⚠ The device is not fully waterproof unless enclosed in the waterproof pouch provided. Do not remove it from the pouch.

5. Failure or Loss

- If a tracker stops working or is lost during racing:
 - Continue racing
 - Report the issue to the race office as soon as possible

6. Viewing Tracking

Live tracking and replay may be available via:

- www.tractrac.com
- TracTrac mobile app (iOS and Android)