

29er

NEW ZEALAND



2025 Polished Concrete Ltd. New Zealand 29er National Championships



Thursday 29th May to Monday 2nd June 2025

The Organising Authority is Manly Sailing Club (Inc)

65 Laurence Street, Manly, Auckland 0930

Notice of Race (NOR)

The notation '[NP]' in a rule means that a boat may not protest another boat for breaking that rule. This changes RRS 60.1(a).

1 RULES

1.1 The event is governed by the rules as defined in *The Racing Rules of Sailing*.



- 1.2** The Yachting New Zealand Safety Regulations Part 1 shall apply.
- 1.3** Under rule 86, Changes to the Racing Rules, the following rules will be changed as follows:
- The race committee may give a finishing place to any boat as follows, if the W flag is used to allow finishing “on the course”. When a race committee boat displays flag W with two sounds, boats that have not yet finished will be given a finishing place anywhere on the race course, at a nearby mark or not. When a boat finishes in accordance with this instruction, she shall be awarded a finishing place matching per overall position in that race.
 - RRS 60.1 (a) will be changed to state that a competitor cannot protest another boat or competitor for breaches of some specific parts of this NoR and the Sailing Instructions
- 1.4** The *29er One Design* class rules will apply.
- 1.5** Appendix T, Arbitration will apply.
- 1.5** RRS 44.1 is changed so that the Two-Turns Penalty is replaced by the One-Turn Penalty.

2 SAILING INSTRUCTIONS

- 2.1** The sailing instructions will consist of the instructions in RRS Appendix S, Standard Sailing Instructions, and supplementary sailing instructions that will be available online at www.manlysailingclub.org.nz at the latest five days before the event. No paper copies will be handed out.

3 COMMUNICATION

- 3.1** The official notice board is located online at www.manlysailingclub.org.nz
- 3.2** [DP] From the first warning signal until the end of the last race of the day, except in an emergency, a boat shall not make voice or data transmissions and shall not receive voice or data communication that is not available to all boats.

4 ELIGIBILITY AND ENTRY

- 4.1** The event is open to all boats of the 29er class that comply with the class rules.
- 4.2** Eligible boats may enter by completing the entry form and submitting it, together with the required fees (see 5.1 below), online at <https://www.manlysailingclub.org.nz/regattas.html> by May 22nd 2025.



- 4.3 To be considered an entry in the event, a boat shall complete all registration requirements and pay all fees.
- 4.4 Late entries will be accepted under the following conditions: at the discretion of the Organising Authority, late entries may be accepted between 23rd-25th May. No entries will be accepted after Sunday 25th May 2025.
- 4.5 To be eligible to compete in this event each entrant and crew member shall be a financial member of a club recognised by the entrant's and crew members' national authority. Proof of affiliated club membership to be presented at registration.
- 4.6 Each competitor, entrant and crew member shall be a current 24-25 season financial member of the New Zealand 29er Class Association or another 29er Class Association affiliated to the International 29er Association. Register here: <https://www.29ernzl.org/payments>.

5 FEES

5.1 Entry fees are as follows:

Class	Entry until 22nd May 2025	Accepted Late Entries ending May 25th
29er Class	\$325 NZD	Additional \$50 NZD

6 ADVERTISING

6.1 Boats may be required to display advertising chosen and supplied by the organizing authority.

7 SCHEDULE

7.1 **Registration and Measurement.**

Registration: Upstairs at Manly Sailing Club

Date	From	To



Thursday 29 th May 2025	1030 hrs 1600hr	1200 hrs 1730hrs
Friday 30 th May 2025	0900 hrs	1000 hrs

Equipment inspection and event measurement:

Date	From	To
Thursday 29 th May 2025	1030 hrs	1700hrs

7.2 Dates of racing:

Welcome and briefing 1000 hrs Friday 30th May 2025

Date	Races per Day Scheduled	Maximum races per day	Time of first warning signal	Target time
Friday 30 th May 2025	4 Races	5 Races	1055 hrs	30 mins
Saturday 31 st June 2025	4 Races	5 Races	1055 hrs	30 mins
Sunday 1 st June 2025	4 Races	5 Races	1055 hrs	30 mins
Monday 2 nd June 2025	4 Races	5 Races	1055 hrs	30 mins

7.3 The series will consist of not more than 16 races.

7.4 On the last scheduled day of racing no warning signal will be made after 1600 hrs.

8 EQUIPMENT INSPECTION

8.1 Each boat shall comply with the 29er class rules at all times during the regatta. No equipment that is subject to measurement under the 29er class rules may be changed during the regatta without the approval of the Race Committee.

8.2 [DP] Boats shall be available for equipment inspection from Thursday 29th May 2025 from 10:30-17:00.

8.3 The following equipment will be inspected or measured: Forestay length; hull weight; sail authenticity and additional fitting checks; YNZ Safety Regulations Pt 1 requirements.



- 8.4** Boats may be inspected at any time.
- 8.5** [DP] Boats shall also comply with RRS 78.1 at all times

9 VENUE

- 9.1** The Regatta will be based from Manly Sailing Club, 65 Laurence Street, Manly, Auckland 0930.
- 9.2** NoR Attachment A - the location of the racing areas.
- 9.3** NoR Attachment B - site plan

10 COURSES

- 10.1** The courses to be sailed will be - Windward/Leeward.

11 PENALTY SYSTEM

- 11.1** RRS 44.1 is changed so that the Two-Turns Penalty is replaced by the One-Turn Penalty.

12 SCORING

- 12.1** 5 races are required to be completed to constitute a series.
- 12.2** A boat's series score shall be the total of her race scores.
- (a) When fewer than 5 races have been completed, a boat's series score will be the total of her race scores.
- (b) When from 5 to 12 races have been completed, a boat's series score will be the total of her race scores excluding her worst score.
- (c) When 13 or more races have been completed, a boat's series score will be the total of her race scores excluding her two worst scores.

13 SUPPORT PERSON VESSELS

- 13.1** All support vessels are required to register at the registration desk (7.1)
- 13.2** [DP] [NP] It is mandatory that all support vessel skippers are required to wear a kill cord (when the engine is running) and all crew must wear a personal flotation device while on the water.

- 13.3** [DP] [NP] All support/coach vessels are required to have a VHF for communications and be available to assist the race committee if required.

14 RISK STATEMENT

RRS 3 states: 'The responsibility for a boat's decision to participate in a race or to continue to race is hers alone.' By participating in this event each competitor agrees and acknowledges that sailing is a potentially dangerous activity with inherent risks. These risks include strong winds and rough seas, sudden changes in weather, failure of equipment, boat handling errors, poor seamanship by other boats, loss of balance on an unstable platform and fatigue resulting in increased risk of injury. **Inherent in the sport of sailing is the risk of permanent, catastrophic injury or death by drowning, trauma, hypothermia or other causes.**

15 INSURANCE

- 15.1** Each participating boat is encouraged to be insured with valid third-party liability insurance with a minimum cover of \$1,000,000 per incident or the equivalent.
- 15.2** The organizing authority is not responsible for verifying the status or validity of any insurance certificates.

16 PRIZES

16.1 Prizes will be given as follows:

- Prizes will be awarded to the first three boats in the event, the first girls team and first mixed crew. There may be other prizes awarded by the Organising Authority.
- The top New Zealand entrant will be the New Zealand Champion for 2025 and will be awarded the 29er Association championship trophy.

17 FURTHER INFORMATION

For further information please contact:-

Fiona Rist, Secretary (Manly Sailing Club)

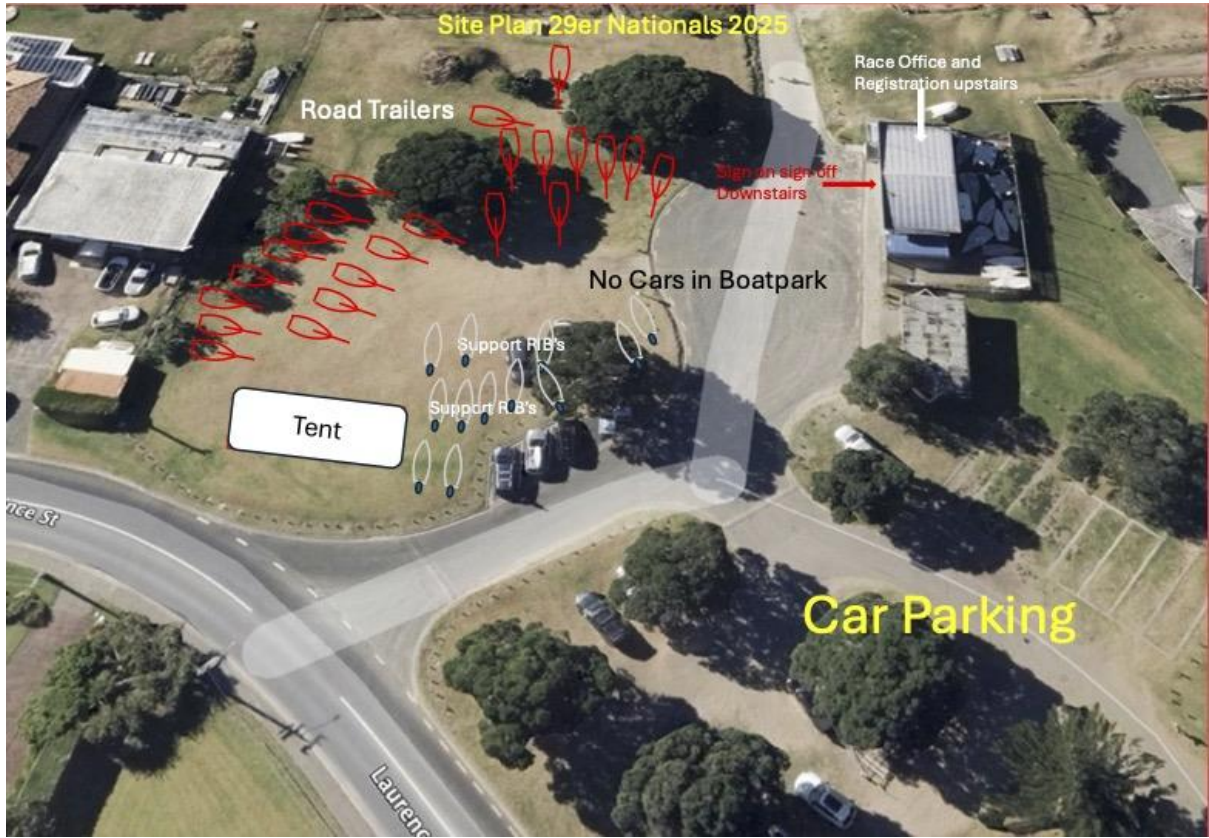
secretary@manlysailingclub.org.nz



Attachment A – Course Area



Attachment B – Site Plan



Amendment One to NoR

The NoR issued in March has been amended as follows:

Para 7.1: Insert:

Equipment inspection and event measurement:

Date	From	To
Thursday 29 th May 2025	1030 hrs	1700hrs

Para 7.2: Maximum number of races per day “Up to 4 Races” is changed to “Up to 5 Races” throughout and insert a new column “Races per Day Scheduled” which is to be “4 Races” throughout.

Para 7.4: 1500 hrs is changed to 1600 hrs.

New Paras 8.2 and 8.3 (other paras are re-numbered accordingly):

- 8.2** [DP] Boats shall be available for equipment inspection from Thursday 29th May 2025 from 10:30-17:00.
- 8.3** The following equipment will be inspected or measured: Forestay length; hull weight; sail authenticity and additional fitting checks; YNZ Safety Regulations Pt 1 requirements.